

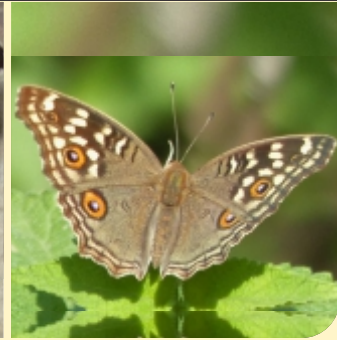
**GREAT EGGFLY MALE**  
*Hypolimnas bolina*



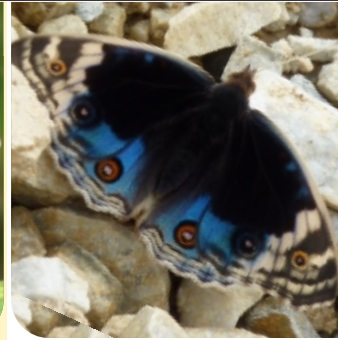
**DANAID EGGFLY MALE**  
*Hypolimnas misippus*



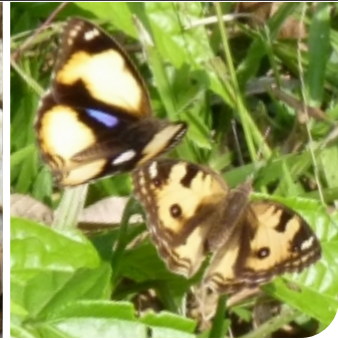
**CHOCOLATE PANSY**  
*Junonia iphita*



**LEMON PANSY**  
*Junonia lemonias*



**BLUE PANSY**  
*Junonia orithya*



**YELLOW PANSY MALE & FEMALE**  
*Junonia hierta*



**PAINTED LADY**  
*Vanessa cardui*



**COMMON MAP**  
*Cyrestis thydamas*



**COMMON SPOTTED FLAT**  
*Celaenorrhinus leucocera*



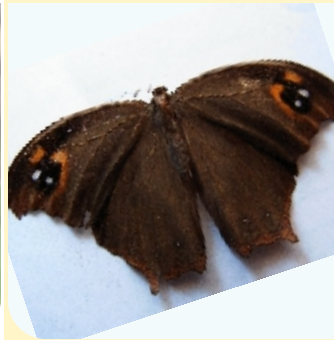
**COMMON BANDED DEMON**  
*Notocrypta paralysos*



**COMMON FIVERING**  
*Ypthima baldus madrasa*



**GLADEYE BUSHBROWN**  
*Mycalesis patnia*



**COMMON EVENING BROWN**  
*Melanitis leda*



**COMMON BARON**  
*Euthalia aconthea garuda*



**COMMON SAILER**  
*Neptis hylas*



**COMMON LEOPARD**  
*Phalanta phalantha*



**COMMON JESTER**  
*Symbrenthia lilaea*



**COMMON LASCAR**  
*Pantoporia hordonia*



**COMMON CASTOR**  
*Ariadne merione*



**INDIAN SKIPPER**  
*Spialia galba*



Pollinators or  
plant munchers?  
- Butterflies





i wonder...  
Rediscovering school science



**'What's that butterfly', don't we often wonder?** This pamphlet identifies for you some of those, one is likely to come across in different parts of India. Read more about them in the article appearing in the second issue(Vol I) of the magazine,"i wonder...".

The first seven images are of papilionids or swallowtails, followed in turn by four of pierids or whites and yellows and five of lycaenids or blues. Next are the many nymphalids or the brush-footed with the last three being the hesperids or skippers.



**CRIMSON ROSE**  
*Pachliopta hector*

**COMMON ROSE**  
*Pachliopta aristolochiae*

